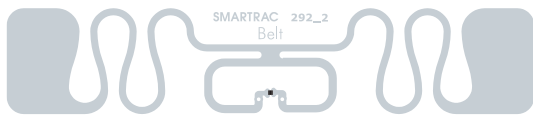


BELT

Compact size and high performance in item level retail and supply chain applications.



Belt tags and inlays are designed for item level, logistics and retail applications offering high performance in apparel and brand protection, industrial and supply chain management solutions. The special design takes into account RF requirements for close coupling.

Belt tags with the Impinj Monza™ 5 ICs, used in retail applications, are included in the approved inlay list for boxed electronics by the RFID Research Center of the University of Arkansas.

Benefits:

- ▶ High performance for a wide range of retail, industrial and supply chain management applications.
- ▶ Compact 3 inch form factor.
- ▶ University of Arkansas approved.
- ▶ ISO 9001:2008 Quality Management System and ISO 14001:2004 Environment Management System support.
- ▶ Serialized TID.

Overview

Operating Frequency

860 - 960 MHz

Integrated Circuit (IC)

Impinj Monza 5

Antenna Size

69,8 x 14 mm (2.75 x 0.55 in)

Die-cut Size

73 x 17 mm (2.87 x 0.67 in)

International Standards

EPC Class 1 Gen 2

ISO 18000-6C

Quality Assurance

100% performance tested

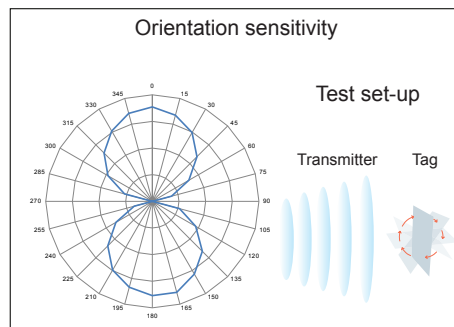
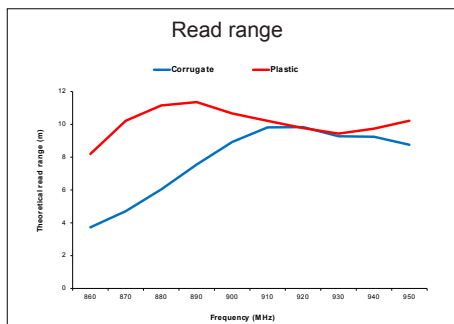
Application Areas

- ▶ Apparel
- ▶ Brand Protection
- ▶ Industrial Automation
- ▶ Supply Chain Management

BELT

| Technical Features | |
|--|--|
| IC | Impinj Monza 5 |
| Memory | EPC memory 128 bit |
| Frequency | 860-960 MHz |
| Antenna Size | 69,8 x 14 mm / 2.75 x 0.55" |
| Die-cut Size | 73 x 17 mm / 2.87 x 0.67" |
| Web Width | 80 mm / 3.15" |
| Operating Temperature | -40°C to 85°C / -40°F to 185°F |
| Bending Diameter (D) | > 50 mm, tension max. 10 N |
| Delivery Formats | Dry inlay, wet inlay, tag |
| Adhesive | Acrylic, water borne adhesive |
| Adhesive Usage Temperature | min. -20°C to 80°C / min. -4°F to 176°F |
| Qty/Reel | 15,000 dry or wet inlays per reel, 5,000 tags per reel |
| Core Size | 76 mm / 3" |
| Shelf Life: minimum of 2 years from the date of manufacture in | 20°C / 68°F, 50% RH |

SMARTRAC TECHNOLOGY GROUP uses three different qualification methods to evaluate the quality and reliability of RFID inlay and tag products. Products are tested according to IEC 60068-2-67 (temperature and humidity), JESD22-A104-B (temperature cycling) and an in-house developed bending test.



All the graphs are indicative: performance in real life applications may vary. The data has been determined based on calculations for transmitters with a 2W ERP output power level.



RoHS CE

For further information, please contact our sales representatives:

Sales Europe
 SMARTRAC TECHNOLOGY GROUP
 Hanauer Landstrasse 291a
 60314 Frankfurt am Main
 Germany
 Tel. +49 69 904 3579 1011
 Fax +49 69 904 3579 1015
 sales.emea@smartrac-group.com

Sales Americas
 SMARTRAC TECHNOLOGY Fletcher Inc.
 267 Cane Creek Road
 Fletcher, NC 28732
 United States of America
 Tel. +1 866 901 7343
 Fax +1 828 651 6063
 sales.americas@smartrac-group.com

Sales APAC
 SMARTRAC TECHNOLOGY PTE. Ltd.
 SINGAPORE
 6 Greenleaf Walk
 Amsterdam Building 2-8
 Singapore 279226
 Tel. +60 4 489 36-0
 Fax +60 4 489 36-50
 sales.apac@smartrac-group.com